

Santa Clause Hand-y Craft

Materials Needed:

- One sheet red felt
- One sheet white construction paper
- One sheet tan construction paper
- 1-2 cotton balls
- 2 googly eyes
- Pencil
- Scissors
- Glue
- 1 small red pom pom

Time to create:

Step 1: Trace your child's hands on the white paper.



Step 1

Step 2: Select the appropriate size face from the template below and trace it on to the tan paper.

Step 3: Overlap the two hands and glue together.

Step 4: Using the pencil, curl the fingertips towards the palm of the hands.

Step 5: Glue the tan face $\frac{1}{4}$ inch from the edge of the palm.

Step 6: Glue the eyes on the face.

Step 7: Glue the pom pom under the eyes for the nose.

Step 8: Cut the red felt into a triangle so the base is $\frac{1}{4}$ inch larger than the top of Santa's head.

Step 9: Glue the triangle hat to the top of Santa's head.

Step 10: Pull a small piece off of a cotton ball and glue it to the top of the hat.

Step 11: Pull and stretch the remaining cotton ball(s) and glue it to the base of the hat.



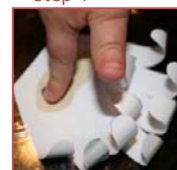
Step 3



Step 4



Step 5



Step 6



Step 7



Steps 8-11



FACE TEMPLATE

